

TL Power Inductors

MILITARY CONSTRUCTION:
Encapsulated to meet construction requirements of MIL-PRF-27F* Type TF5S04ZZ.

APPLICATION:
These inductors have low losses in the 3 to 100 KHz frequency range, making them ideal for switching regulator and AC filter choke applications.

INDUCTANCE:
Part numbers correspond to inductance values in microhenries,

which are measured at 1 V, 10 KHz, 0 DC with an inductance tolerance of +15%, -5%. Values of inductance other than listed in an existing size are available. Part Number would be: TL(A, B, or C) - (inductance in Microhenries at 0 DC).

CURRENT RATINGS:
Listing I_1 , is for approximately 10% drop in Inductance with a typical 20 degree C temperature rise, and Listing I_2 is for approximately 20% drop in inductance with a typical 40 degree C temperature rise.



* Superseded MIL-T-27

Part No.	No. of Windings	Inductance at 0 DC (uH)	I_1 at 10% drop in L (amps)	I_2 at 20% drop in L (amps)	Max. DCR (ohms)
TLA-1250	1	1250	.8	1.2	.7
TLA-800	1	800	1	1.5	.45
TLA-500	1	500	1.2	1.8	.3
TLA-350	1	350	1.5	2.2	.2
TLA-200*	2	200	2	3	.12
		50	4	6	.03
TLA-88*	2	88	3	4.5	.052
		22	6	9	.013
TLA-32*	2	32	5	7.5	.02
		8	10	15	.005

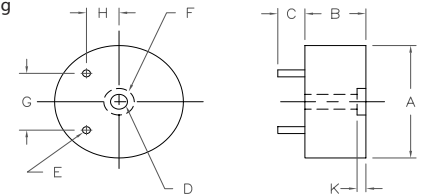
Part No.	No. of Windings	Inductance at 0 DC (uH)	I_1 at 10% drop in L (amps)	I_2 at 20% drop in L (amps)	Max. DCR (ohms)
TLC-10000	1	10000	.84	1.1	2.1
TLC-6400	1	6400	1	1.35	1.4
TLC-2500	1	2500	1.6	2.2	.55
TLC-1600	1	1600	2.1	2.8	.34
TLC-1000	1	1000	2.6	3.5	.21
TLC-640*	2	640	3.3	4.5	.13
		160	6.6	9	.033
TLC-400*	2	400	4	5.4	.088
		100	8	10.8	.022
TLC-240*	2	240	5	6.8	.056
		60	10	13.6	.014

Part No.	No. of Windings	Inductance at 0 DC (uH)	I_1 at 10% drop in L (amps)	I_2 at 20% drop in L (amps)	Max. DCR (ohms)
TLB-3000	1	3000	.8	1.2	1.2
TLB-2000	1	2000	1	1.5	.8
TLB-1200	1	1200	1.25	1.88	.5
TLB-780	1	780	1.6	2.4	.3
TLB-520	1	520	2	3	.2
TLB-320	1	320	2.5	3.75	.13
TLB-220*	2	220	3	4.5	.08
		55	6	9	.02
TLB-120*	2	120	4	6	.05
		30	8	12	.013
TLB0- 80*	2	80	5	7.5	.032
		20	10	15	.008

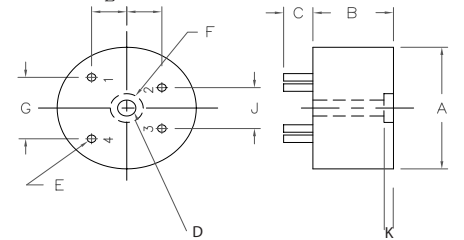
*Two Identical windings brought out to four terminals permit series, parallel, Center tapped, or transformer connections.

Mechanical Drawings

Single Winding



Dual Winding



Dimensions in Inches

Part No.	Winding	A dia. ±.030	B ±.063	C ±.030	D dia. ±.010	E dia. ±.005	F dia. ±.015	G ±.010	H ±.010	J ±.010	K C'bore dia. ±.015	L ±.010	Wt. Oz.
TLA	Single	.875	.438	.250	.156	.073	.281	.400	.200	—	.082	—	.6
	Dual		.563						.200		.200		
TLB	Single	1.188	.563	.250	.156	.073	.281	.600	.300	—	.082	—	1.5
	Dual		.688						.400		.300		
TLC	Single	1.375	.750	.250	.156	.073	.281	.800	.300	—	.082	—	3
	Dual		.813						.400		.500		



8203 Vineland Avenue
Sun Valley, CA 91352
Tel. 818-504-0644
Fax. 818-768-0395